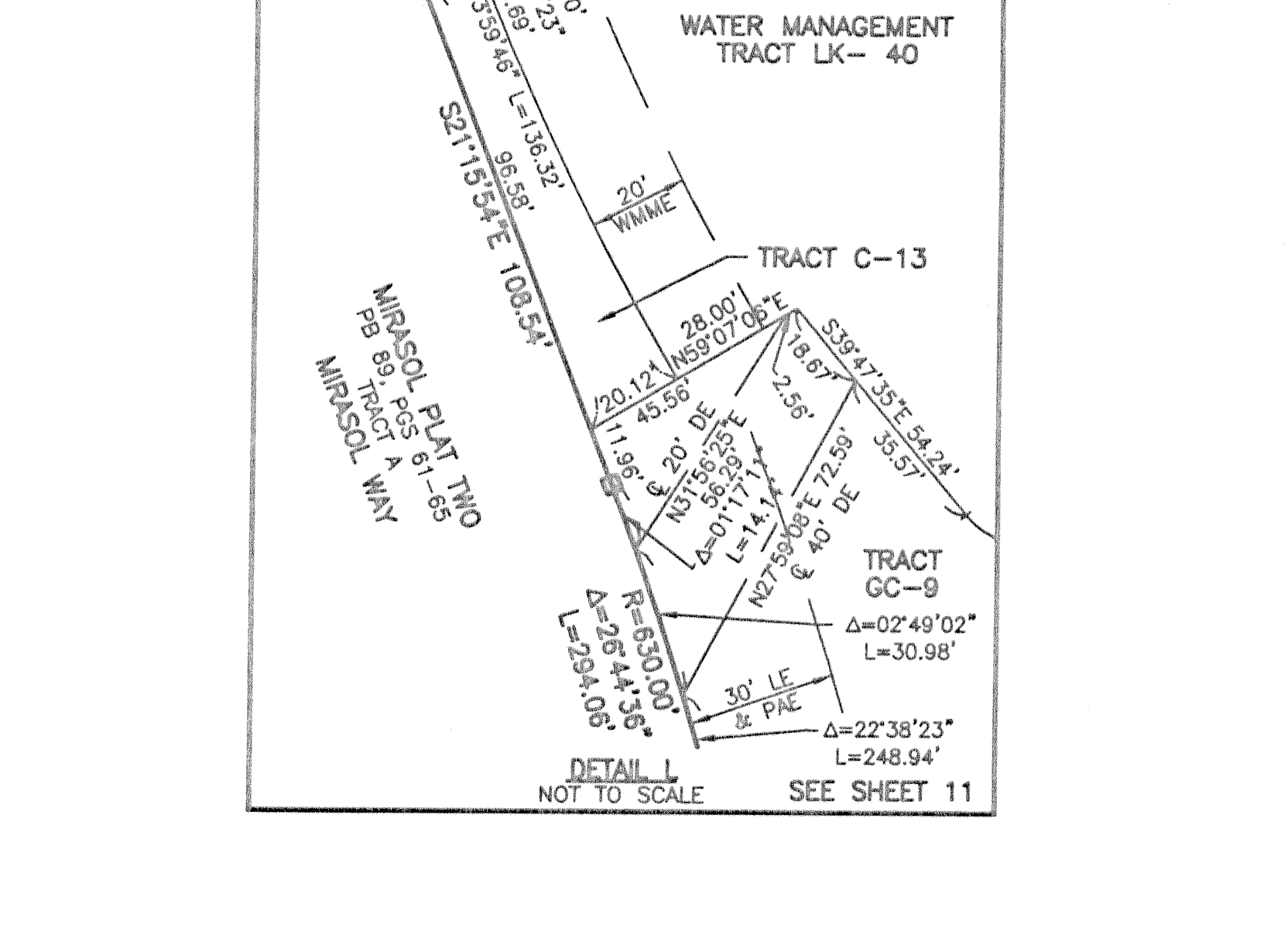
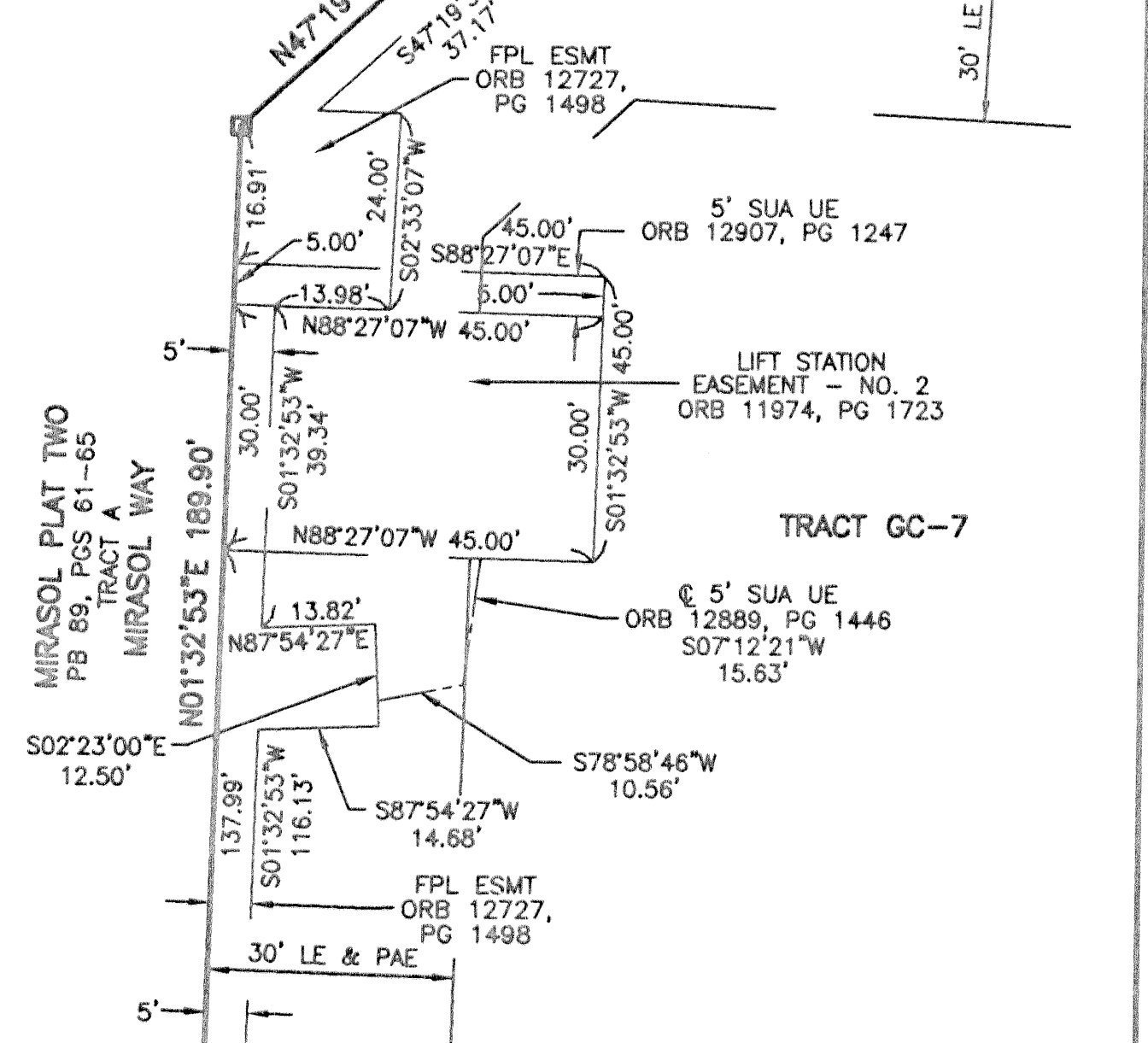
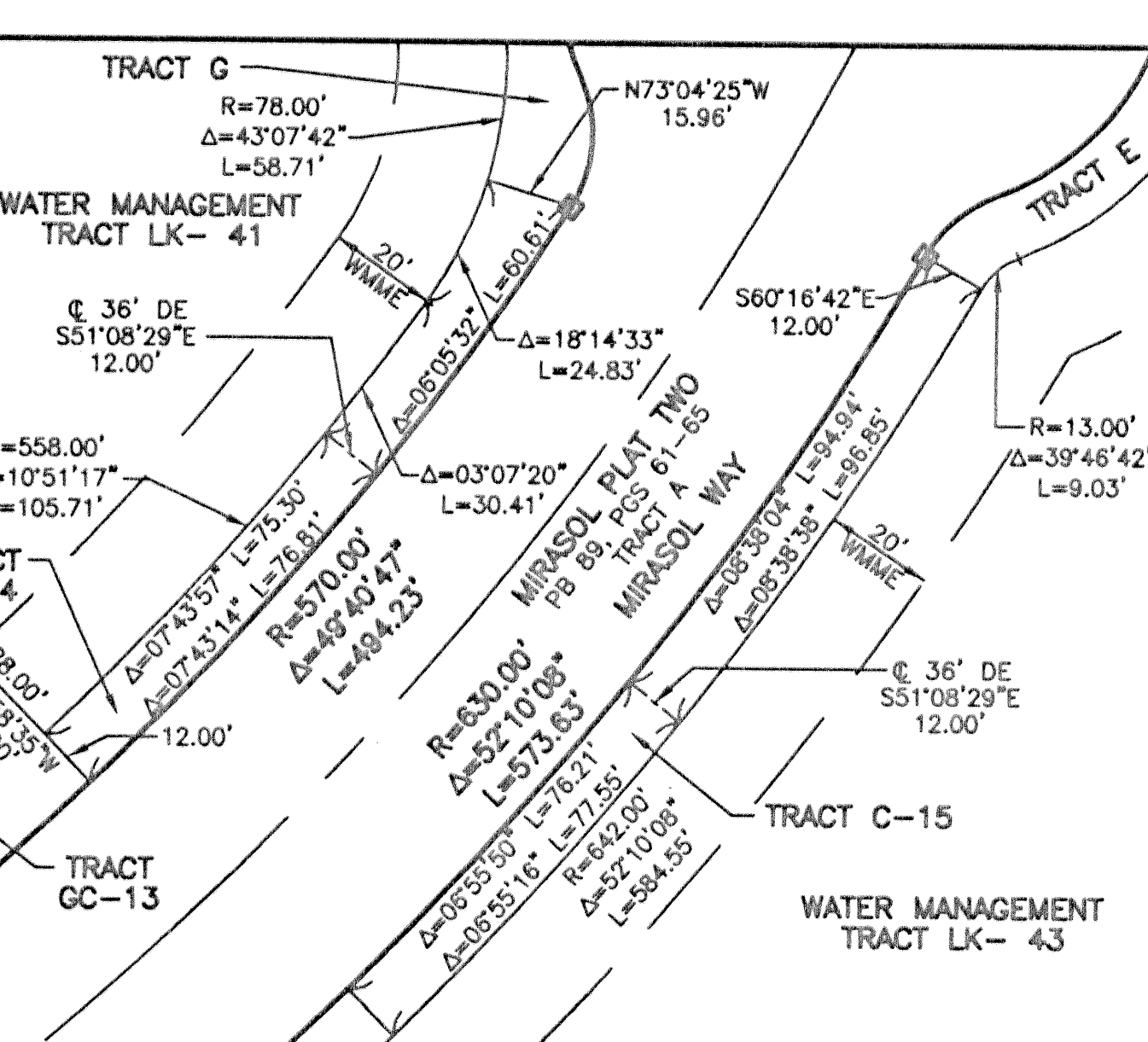
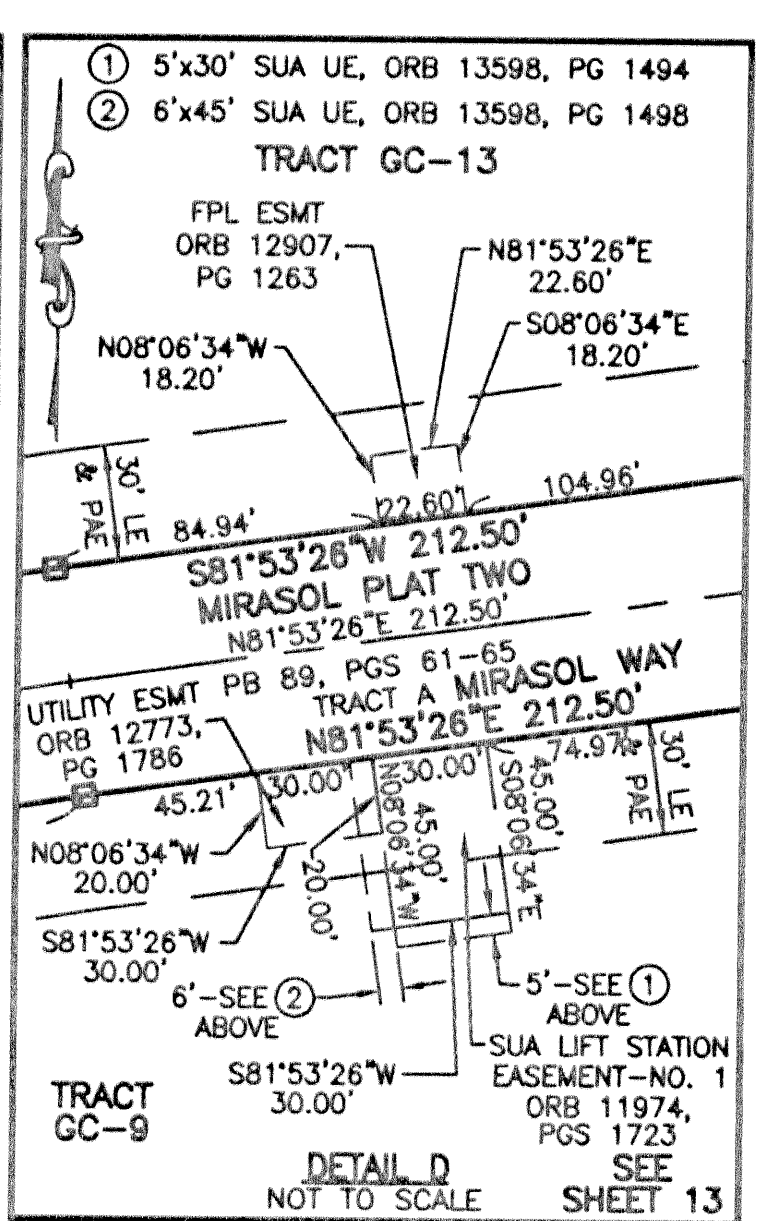
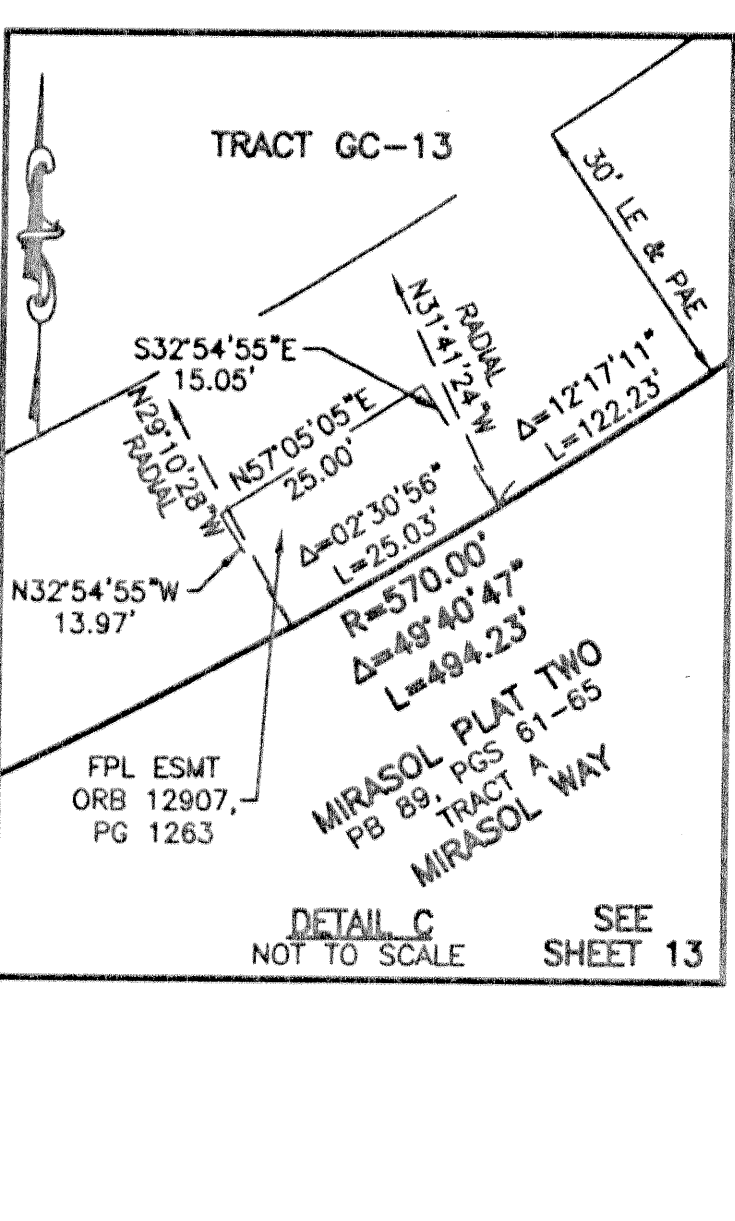
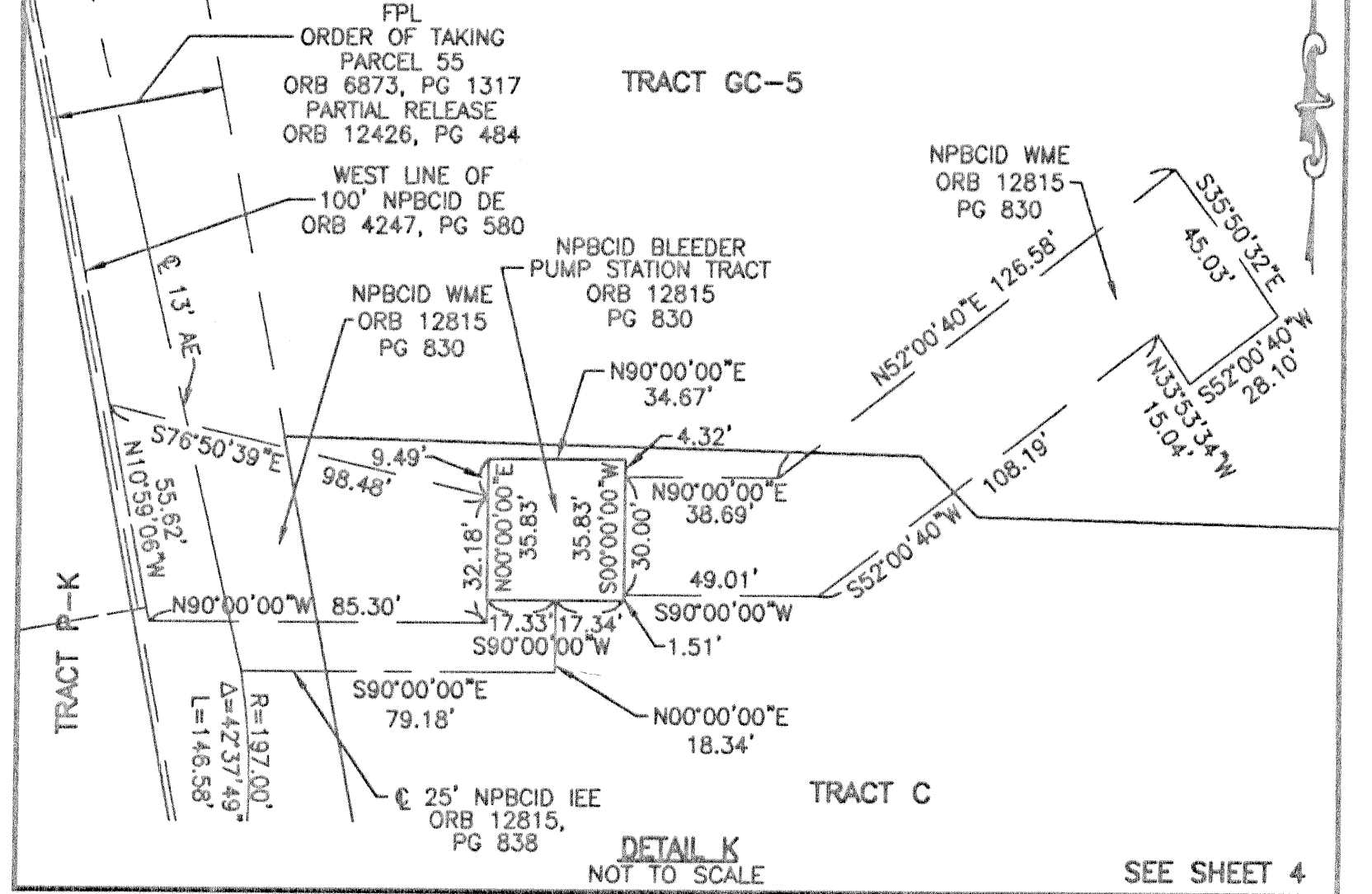
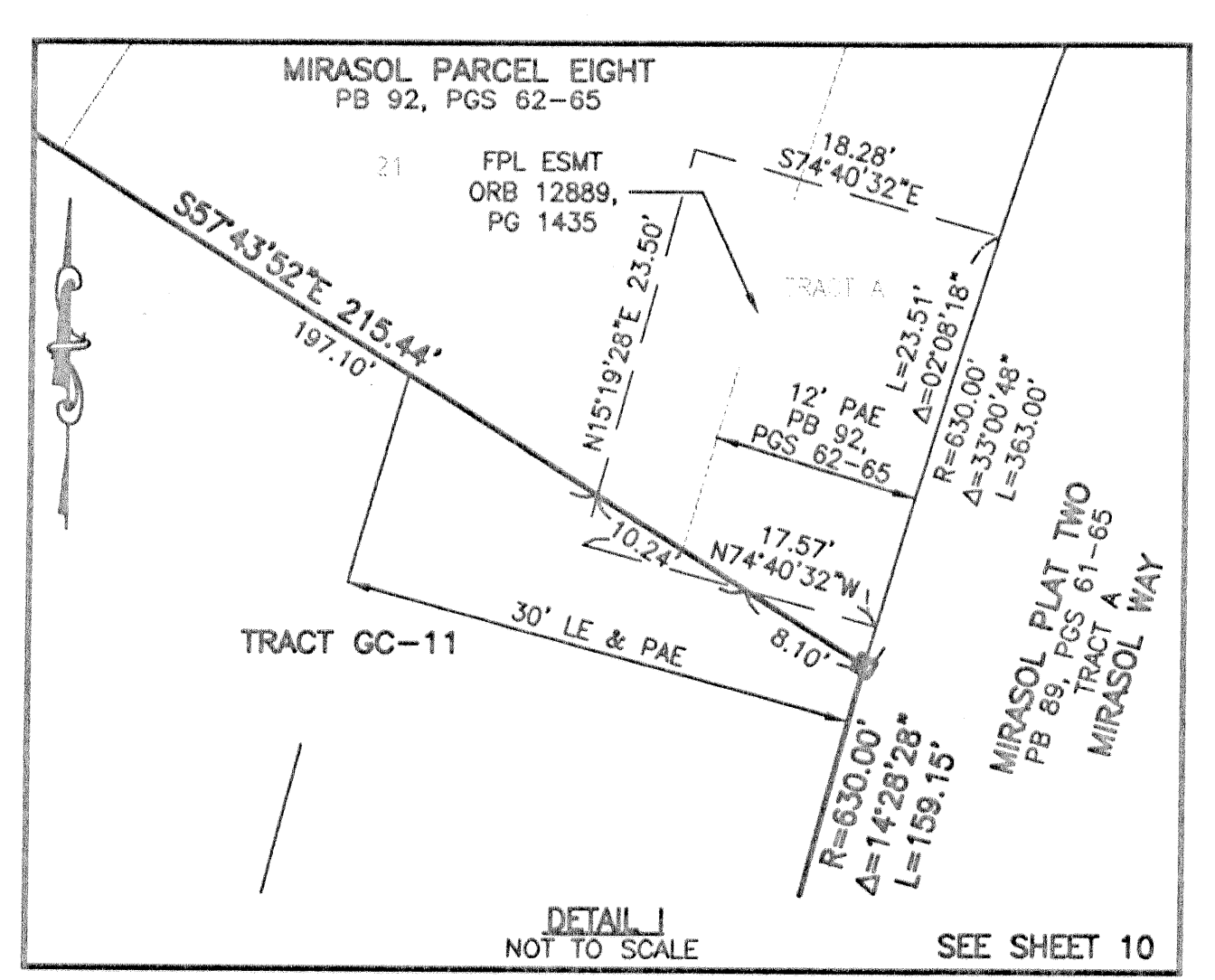
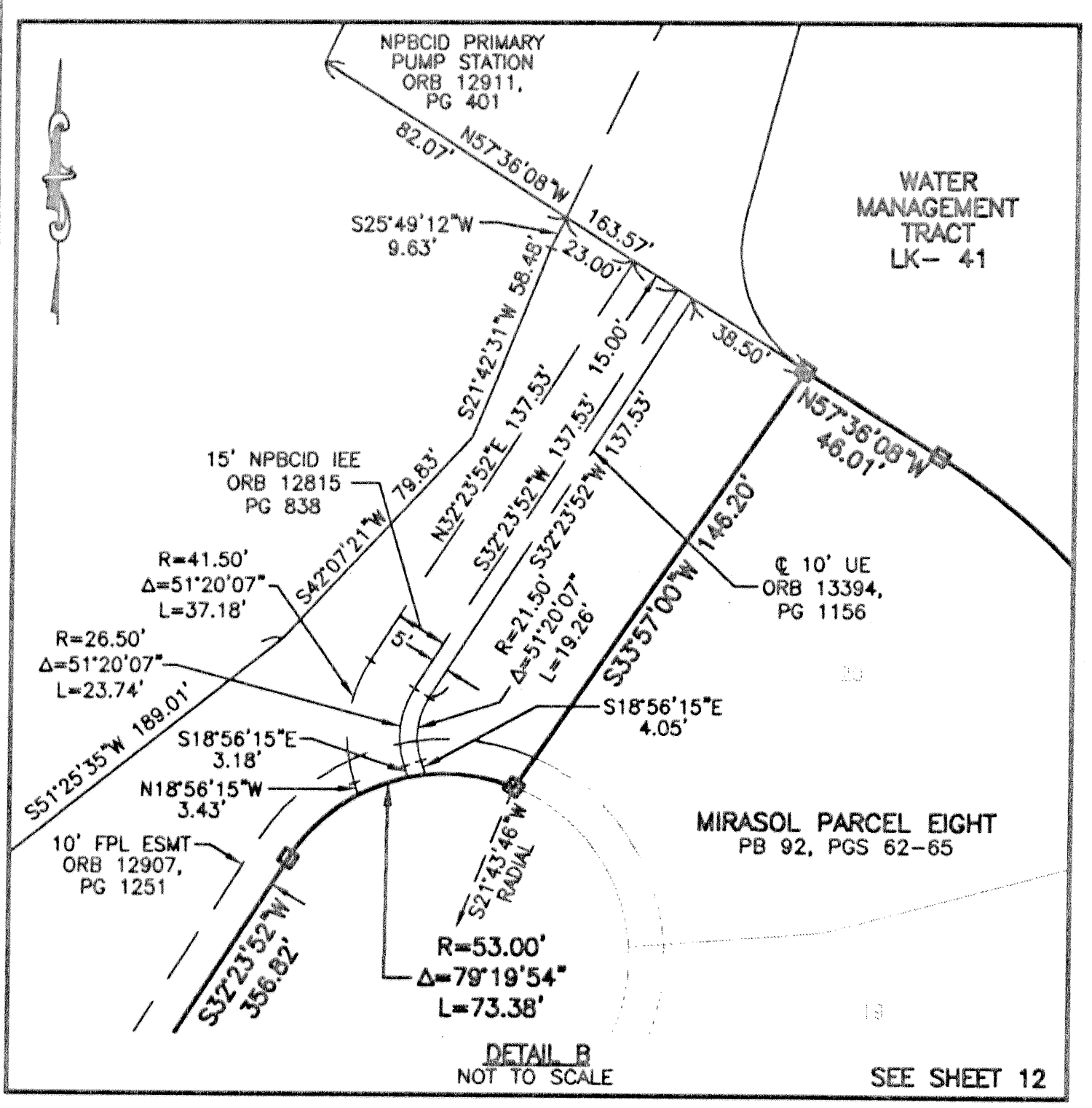
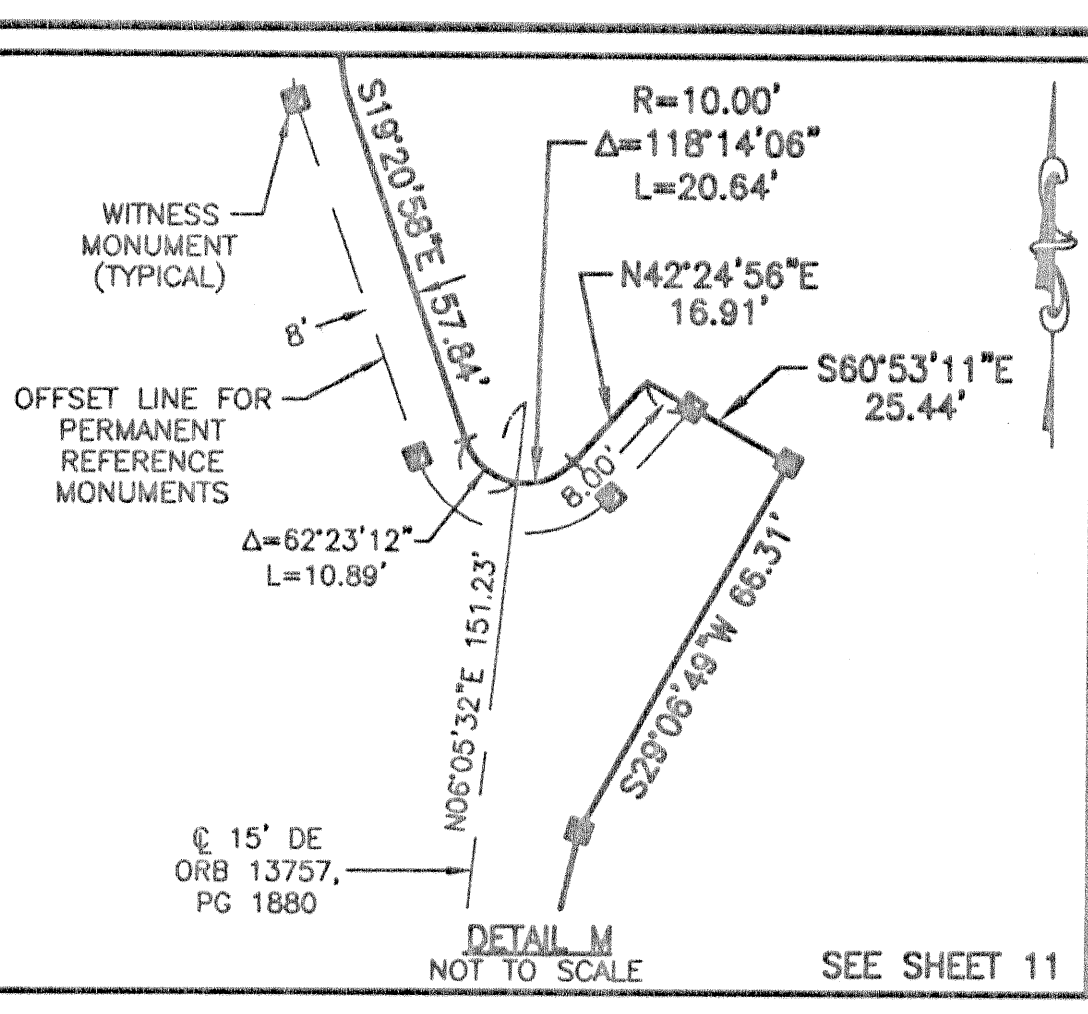
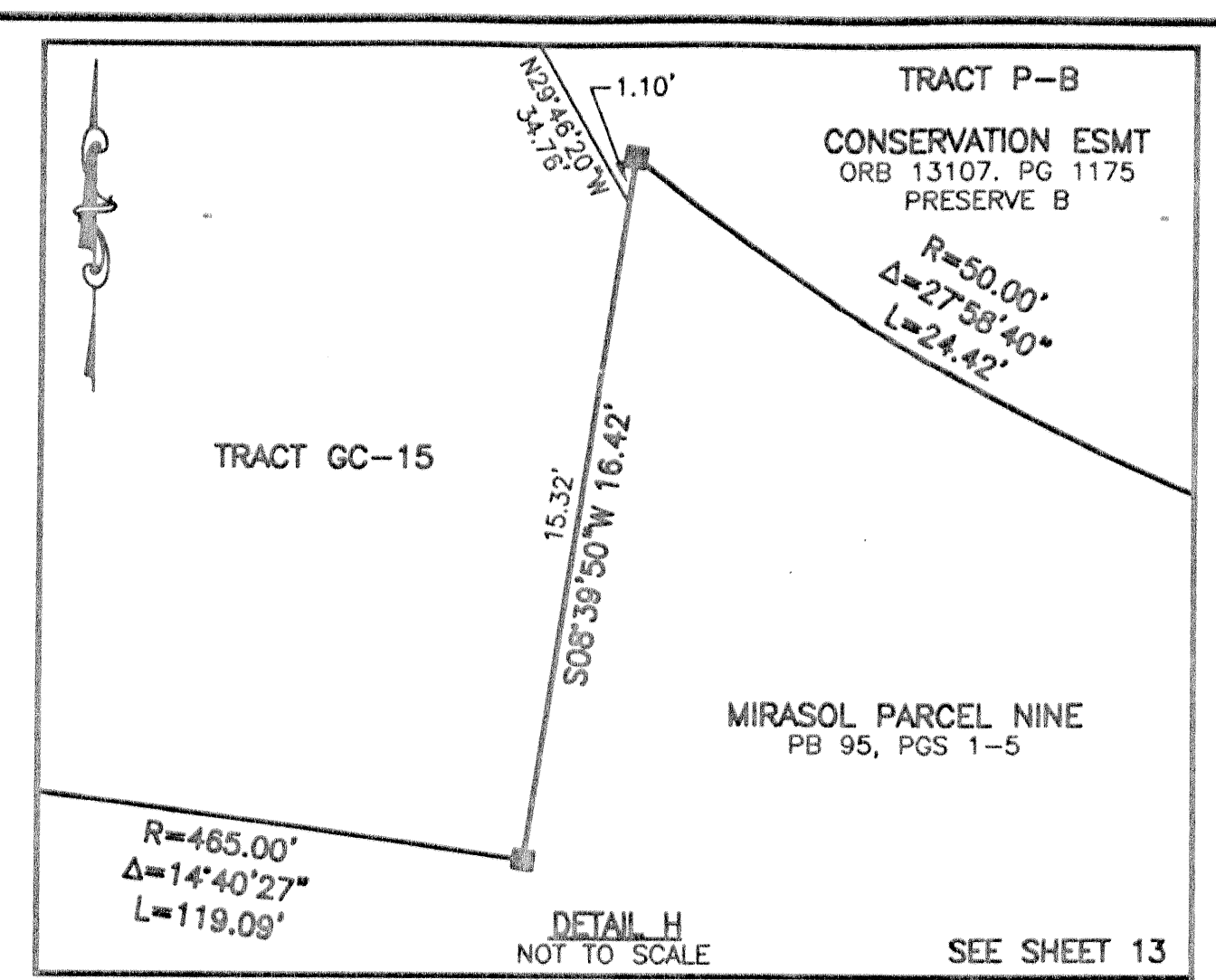
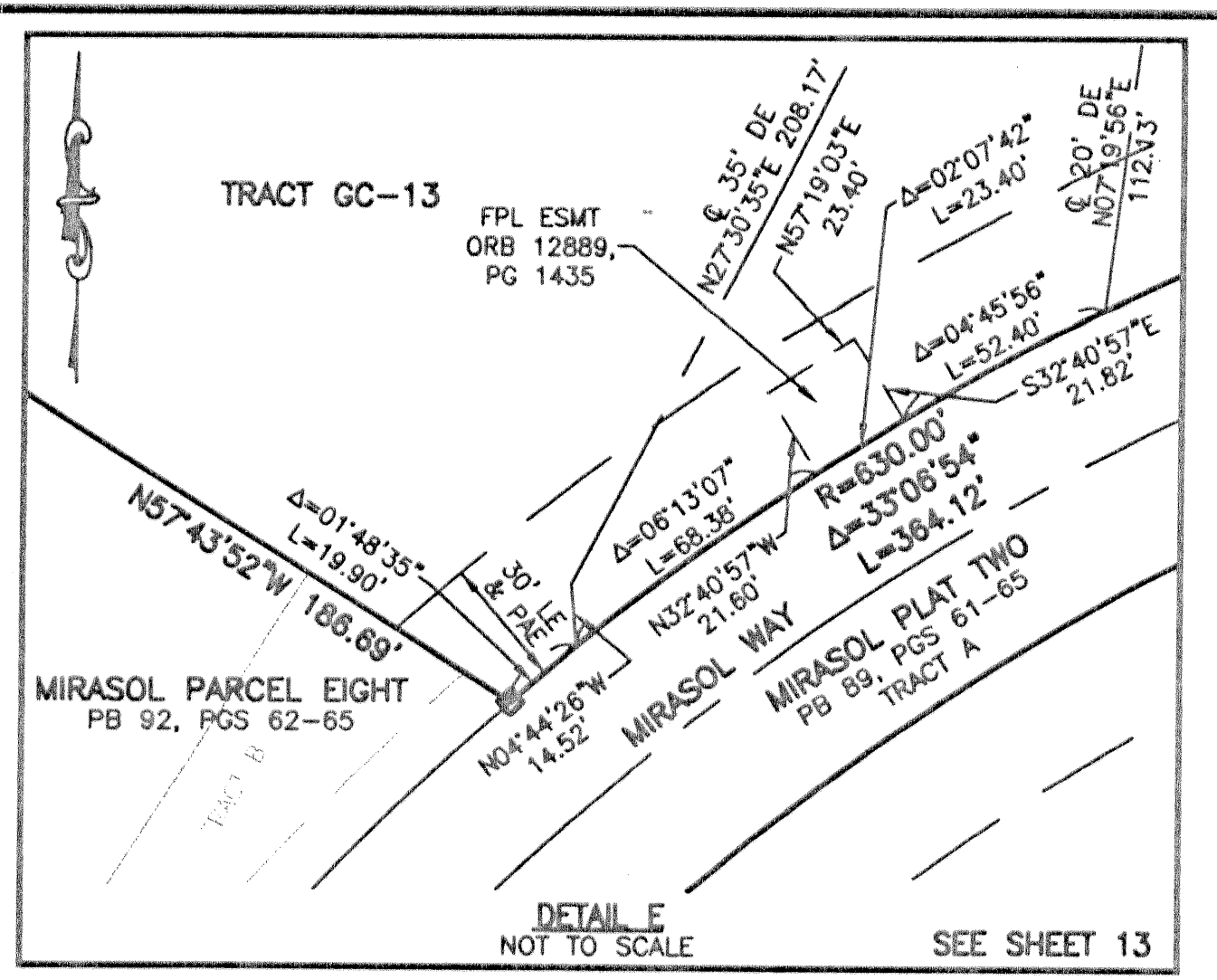
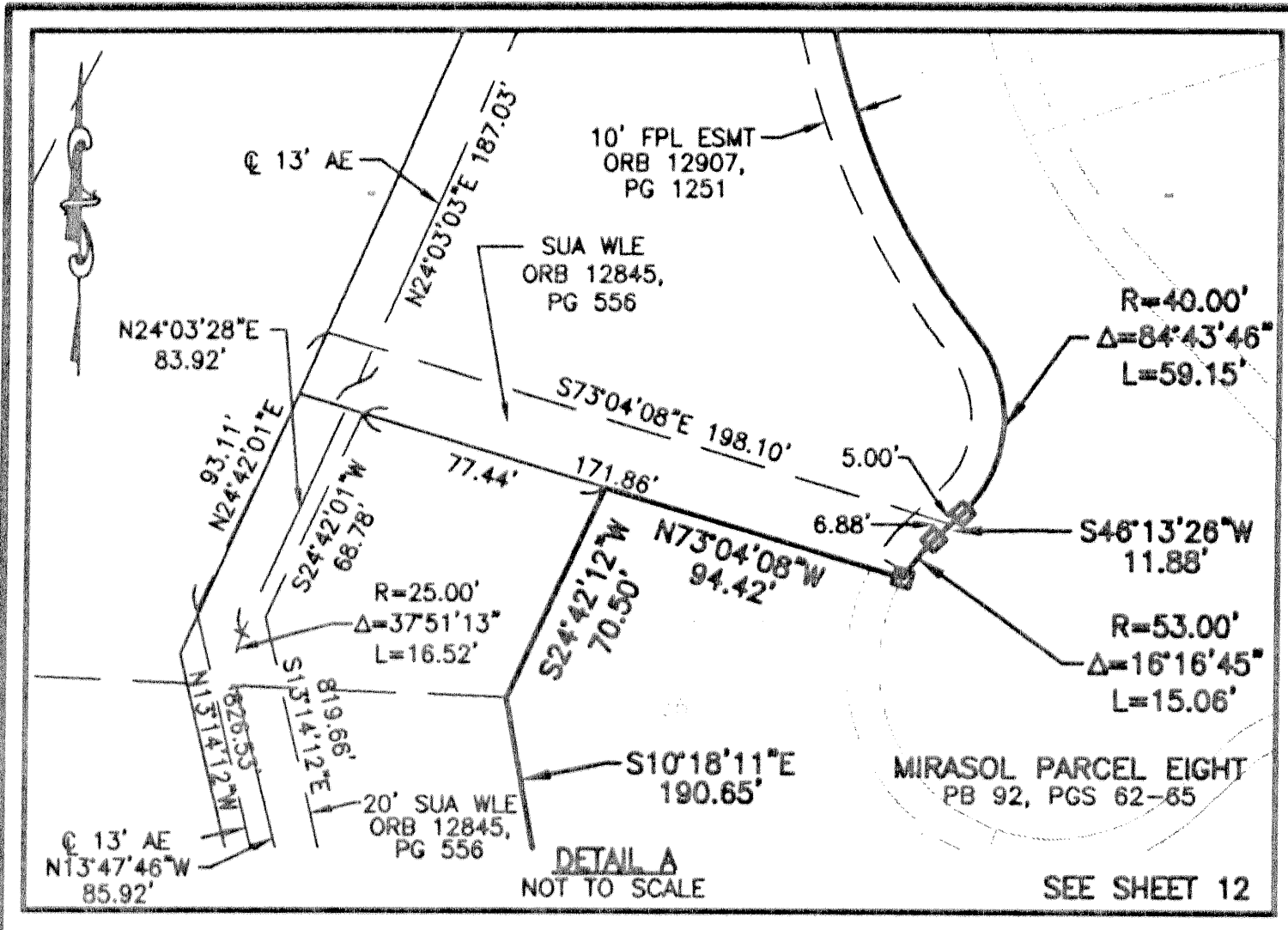


STATE OF FLORIDA
COUNTY OF PALM BEACH
THIS PLAT WAS FILED FOR
RECORD _____ DAY OF _____
AD, 2003 AND DULY RECORDED
IN PLAT BOOK _____ ON PAGES
_____ THROUGH _____
DOROTHY H. WILKEN, CLERK
BY: _____ D.C.

CIRCUIT COURT SEAL



MIRASOL PLAT FIVE

PART OF GOLF DIGEST P.C.D.
BEING IN SECTIONS 32 AND 33, TOWNSHIP 41 SOUTH, RANGE 42 EAST,
AND SECTIONS 04 AND 05, TOWNSHIP 42 SOUTH, RANGE 42 EAST,
CITY OF PALM BEACH GARDENS, PALM BEACH COUNTY, FLORIDA
SHEET 19 OF 19

THIS INSTRUMENT WAS PREPARED BY MARY HANNA CLODFELTER, P.S.M. IN THE OFFICES OF MOCK, ROOS & ASSOCIATES, INC., 5720 CORPORATE WAY, WEST PALM BEACH, FLORIDA 33407.

SCALE: N/A
P.A. NO.: 99367.00
DATE: MAY, 2002
DRAWING NO.: 41-42-32-59

FLORIDA L.B. NO. 48
MOCK ROOS
ENGINEERS & PLANNERS
5720 Corporate Way, West Palm Beach, Florida 33407
(561) 663-3113, fax 478-7248

MIRASOL PLAT FIVE
PART OF GOLF DIGEST P.C.D.
BEING IN SECTIONS 32 AND 33,
TOWNSHIP 41 SOUTH, RANGE 42 EAST,
AND IN SECTIONS 04 AND 05,
TOWNSHIP 42 SOUTH, RANGE 42 EAST,
CITY OF PALM BEACH GARDENS,
PALM BEACH COUNTY, FLORIDA